

VIRTUAL PANELS

Series

Ultra HD Fine Pitch
LED Display



Ultra HD Fine Pitch LED Display

Virtual Panels is made for indoor fine pitch led display, available in pixel pitches of 0.9,1.2,1.5 and 1.8mm. Thanks to high quality LEDs, Virtual Panels is able to deliver crystal clear images and vibrant colors, capturing audience' attention and creating unforgettable visual experience. Virtual Panels can be applied to broadcasting, control rooms, smart city, airports, movie theaters, hotels, corporate facilities, museums and so on.



- High-Quality Black LEDs
- Unparalleled Display Quality
- 16:9 Perfect Sizing
- Magnetic Module
- High Reliability
- Silent Running
- Compact & Lightweight
- Superior Heat Dissipation Performance
- Seamless Splicing
- Installation Method

01



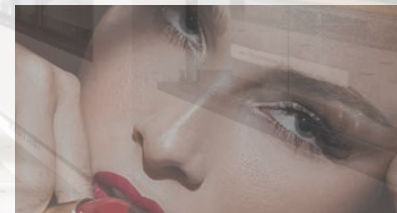
High-Quality Black LEDs

Virtual Panels uses high brightness matte black LEDs, guaranteeing low attenuation, high reliability, good consistency and superior weather resistance.

· With a high contrast ratio 5000:1, Virtual Panels provides exceptionally vivid images.



High Contrast



Low Contrast

02

Unparalleled Display Quality

- The display features good color uniformity without mosaic effect.
- No flickering, no ghosting and no scanning lines, even on a DSLR camera.
- Wide viewing angle and soft display images, suitable for close viewing distance.



Ultra Slim



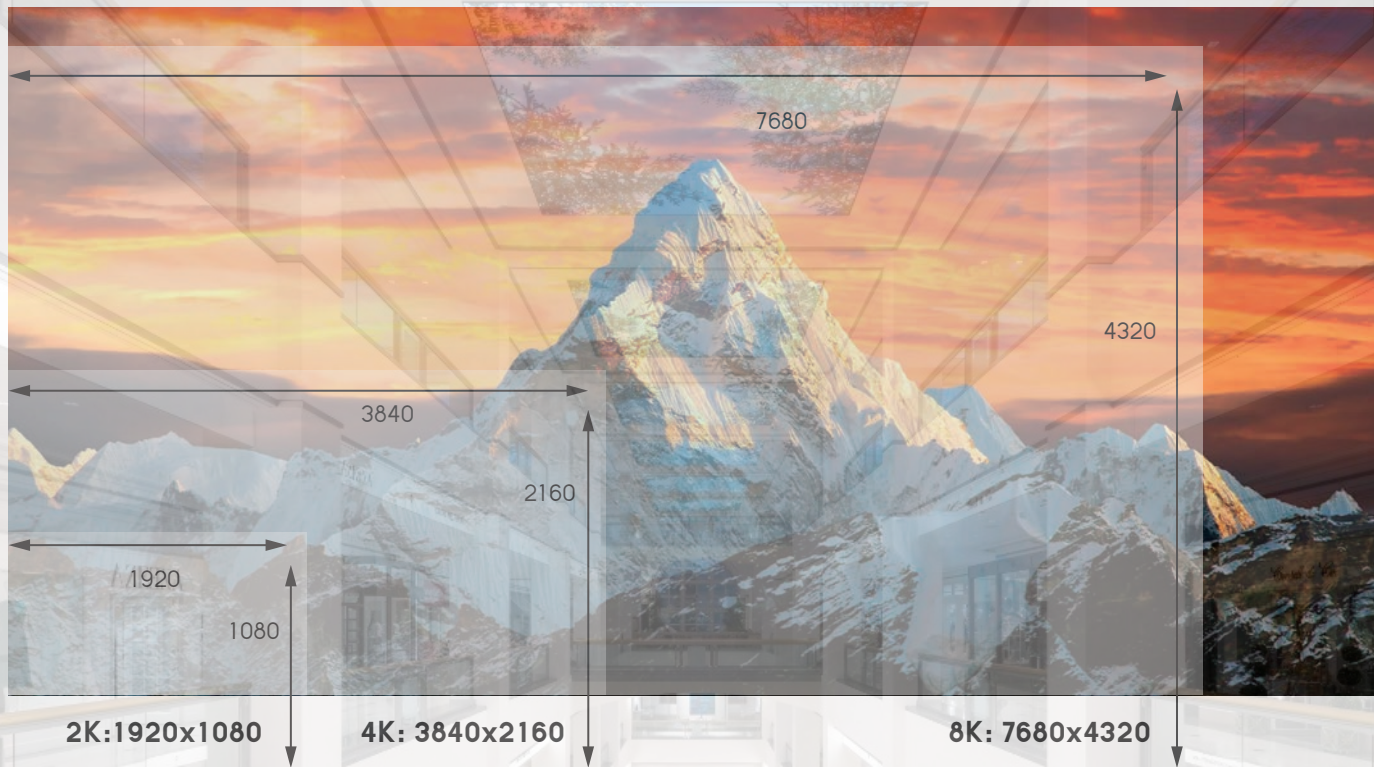
Super Clear Quality



High Refresh Rate



Low Power Consumption



03

16:9 Perfect Sizing

· With standardized aspect ratio ideal for eyes , the 16:9 Virtual Panels cabinets can perfectly match mainstream video and content sources without distortion.



MODULAR DESIGN

04 / Magnetic Module

· Magnetic secured modules are connected in a cable-free manner, which significantly improves the stability as well as maintenance efficiency.

05

High Reliability

- Integrated power supply means no extra cables, ensuring the stable operation and tidy internal structure.
- All connections between cabinets are hidden inside leaving no exposed cables.



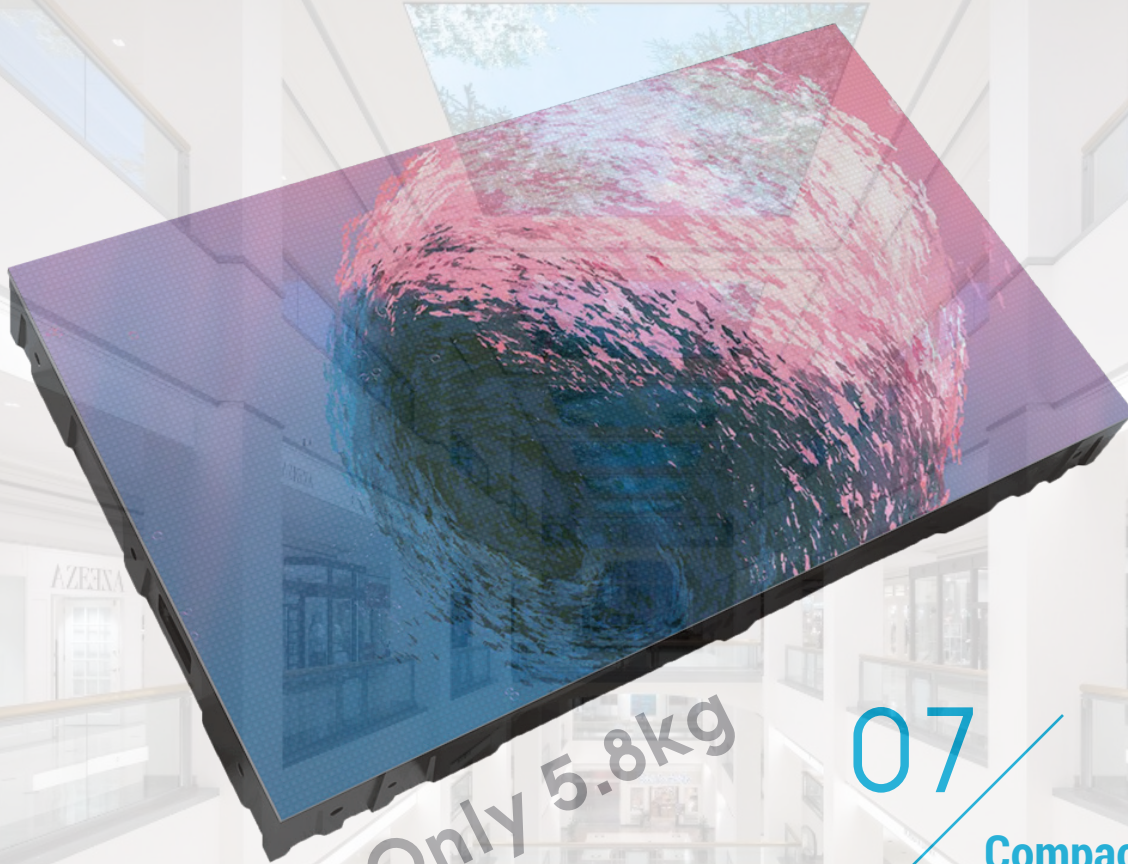
INTEGRATED POWER SUPPLY

06



Silent Running

· Fanless design greatly reduces the working noise to less than 40dB, providing a silent environment and comfortable viewing experience.



Only 5.8kg

07

Compact & Lightweight

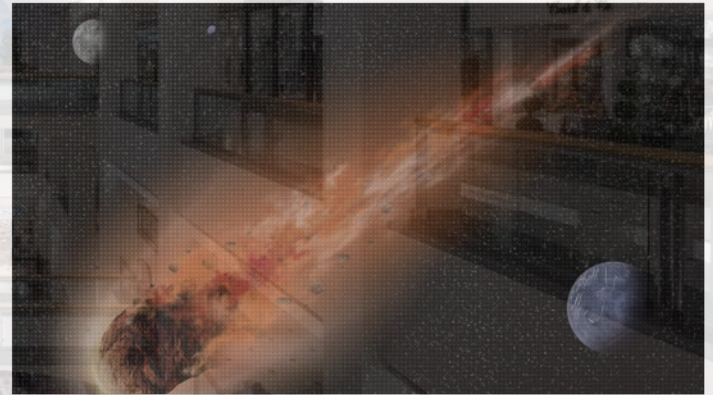
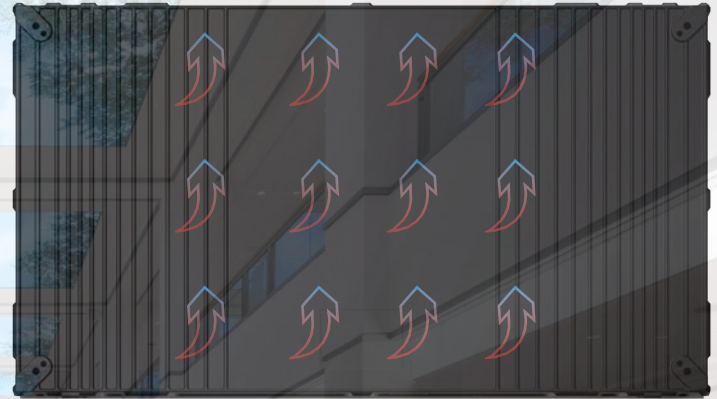
· Because of die-cast aluminum structure with high precision, Virtual Panels weighs 5.8kg only, ensuring a quick, easy installation.

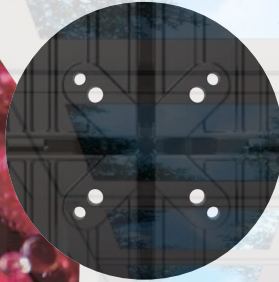
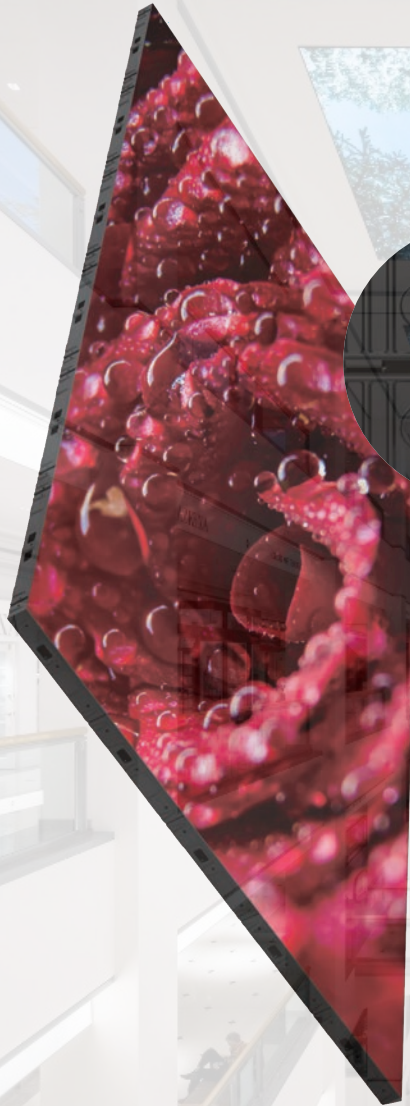
08



Superior Heat Dissipation Performance

- Multi-layer PCB design allows for uniform current distribution, low power consumption, fast heat dissipation and high reliability, which effectively prolongs the life of the screen.





09

Seamless Splicing

- Locating pins and die-cast aluminum structure ensure excellent alignment and jointing of between cabinets.



Flat screen

Concave screen

10

Installation Method

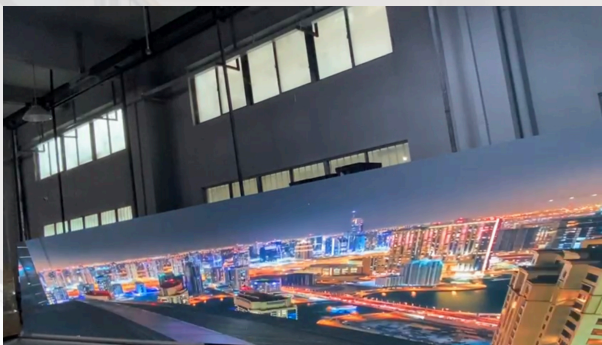
- Virtual Panels supports flat or concave installations, satisfying your various need. Virtual Panels can be mounted on both Ceiling & Walls.

Parameters

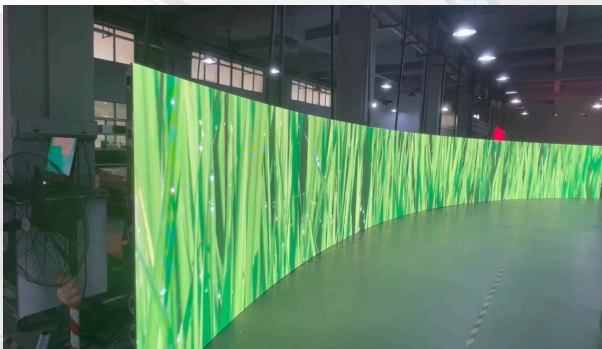
STANDARD SIZE

Model	GH0.9	GH1.2	GH1.5	GH1.8
Pixel Pitch (mm)	0.937	1.250	1.562	1.875
LED Configuration	SMD 4-in-1 (common cathode)	SMD1010	SMD1010 / SMD 1212	SMD1515
Adjustable Brightness (cd/m ²)	350-400		500-600	
Module Size (WxH mm)	300x168.75	300x168.75	300x168.75	300x168.75
Module Resolution	320x180	240x135	192x108	160x90
Refresh Rate (Hz)		2800~3840		
Viewing Angle (H/V)		160°/160°		
Grayscale (Bit)		14 bit		
Cabinet Size (WxHxD mm)		600x337.5x58		
Cabinet Weight (kg/panel)		5.8		
Power Consumption (Max/Avg W/m ²)		450/135		

* Technical specifications are subject to change without prior notice. Please contact our sales representative for the latest information.



VIRTUAL PANELS



For more information please contact your local sales rep or visit www.ArtificialSky.com

